

**6<sup>TH</sup>** EDITION   
**ASEW**  
Sustaining Impact Summit

**6TH EDITION THEME:**

# **Resourcing Impact**

**Exploring opportunities, gaps, and strategies  
for sustaining impact initiatives in Africa**

**August 29 & 30, Hybrid**

**Summit Brief**



# About

The **Sustaining Impact Summit (SIS)** is an annual event aimed at promoting the sustenance of impact and impact-focused organizations in Africa. Each year, SIS brings together social enterprises and NGOs, alongside industry experts, policymakers, and representatives from local and international development organizations to explore how impact-focused organizations can sustainably resource their impact-related work, particularly in cases of limited or no external support.

At SIS, our activities are practitioner-oriented, focusing on social enterprises and NGOs alike, providing a vital platform to celebrate their resilience and innovations in addressing the UN Sustainable Development Goals in Africa. We firmly believe that such impact-focused organizations have the potential to thrive, thereby propelling sustainable development and positive change across the continent. Through expert panels, tailored workshops, mentorship opportunities, and collaborative discussions, SIS empowers attendees to unleash their inherent capabilities and devise strategies for long-term success.

Furthermore, SIS is structured to cultivate collaboration and innovation among such impact-focused organizations across Africa. Attendees are engaged with valuable insights, networks, and resources to navigate their journey toward building resilience and sustaining their innovative work for sustainable development.

Join us at SIS in envisioning a future where impact-focused organizations are self-sufficient in resourcing their impact-related work, thereby paving the way for a more resilient and prosperous Africa.

## CONVENER

**The African Social Enterprise Workshop (ASEW) is a technical support platform for African social enterprises. Using interactive workshop as a medium of engagement, ASEW provide training and knowledge exchange activities to develop the skill set and capacity of African social entrepreneurs in creating sustainable organisations and lasting societal impact.**

**ASEW has been convening annual Summer Edition workshops (now Sustaining Impact Summit) since 2019 and is a Catalyst2030 member.**

# Rationale

At ASEW, we recognize the critical role that social enterprises and NGOs play in advancing the UN Sustainable Development Goals (SDGs), particularly across African countries. Leveraging our extensive experience in organizing impactful workshop sessions with diverse organizations, we've identified a common challenge: sustaining impact initiatives.

For our participants, this entails navigating a complex landscape to secure financing, develop human capital, access technical expertise, forge partnerships, find appropriate mentorships, and more. This challenge is compounded by shifting funding priorities, harsh business environments, and volatile socio-political landscapes worsened by crises like COVID-19 and climate change, affecting both early-stage ventures and established entities across the continent.

In response to this pressing need, we've pioneered this annual summit. Here, we shine a spotlight on these challenges and collaboratively craft strategies for impact-focused organizations to navigate them effectively towards achieving self-sufficiency. By convening thought leaders and practitioners, our summit empowers impact-focused organizations with the insights and resources necessary to sustain their impact, drive meaningful change, and make significant contributions towards addressing the continent's sustainable development challenges.

## Mission

**To celebrate the resilience of impact-focused organizations across Africa, while highlighting the barriers to sustaining impact and discussing relevant strategies for overcoming them.**

### SIS Objectives

#### **Celebrate Resilience**

Recognising the tireless efforts and innovative solutions of social entrepreneurs and NGOs, the summit provides a platform to honor their achievements and amplify their voices on a regional and global scale.

#### **Address Critical Challenges**

By facilitating open dialogue and exchange, the summit confronts the pressing economic, social, and environmental issues facing Africa, seeking collaborative solutions that harness the collective expertise of attendees.

#### **Foster Collaboration**

Emphasising the power of collaboration, the summit cultivates partnerships among diverse stakeholders, forging connections that transcend geographical boundaries and organizational silos to drive sustainable impact.

#### **Empowerment and Capacity Building**

Through workshops, mentorship sessions, and skill-building workshops, the summit empowers social entrepreneurs and NGOs with the tools, resources, and support needed to sustain their impact work.

#### **Inspire Action**

We share stories of resilience, success and practically-relevant reports to inspire everyone to keep working for a better Africa.



**OLUMAYOWA OKEDIRÁN**  
Director of Programs,  
Students For Liberty



**DR SOCRATES MAJUNE**  
Lecturer,  
University of Nairobi



**MOSES KANYESIGYE**  
Programme co-ordinator,  
YouLead Africa & East African  
Business Council



**KASAPO MANDA**  
Country Director,  
2nd Door Zambia



**THEODORA CHIMONEZ**  
Founder/ Chief of Product,  
Matchimoni Limited



**AKIN ALABI**  
Co-Founder & CEO,  
Corporate Farmers  
International



**DR JASSIM HAJI**  
President, International Group  
of Artificial Intelligence



**DR AMANDINE ROBIN**  
Innovation Advisor and  
Design Thinker



**ZIPPORAH MUIRURI**  
MBA Program Leader, Tangaza  
University College- Nairobi,  
Kenya.



**RAJU KENDRE**  
Founder and CEO,  
Eklavya India Foundation



**RONITA GHOSH**  
President, World Chamber for  
Social Business  
& Co-convenor, ASEW



**DR ADEYEMI ADELEKAN**  
Convenor,  
African Social Enterprise  
Workshop (ASEW)

HOSTED BY

EVENT PARTNERS

AFRICAN SOCIAL ENTERPRISE WORKSHOP

# SUSTAINABILITY THROUGH MARKET CREATION AND ACCESS

EXPLORING OPPORTUNITIES, BARRIERS, AND  
STRATEGIES FOR AFRICAN SOCIAL ENTERPRISES

[WWW.ASEWORKSHOP.COM](http://WWW.ASEWORKSHOP.COM)

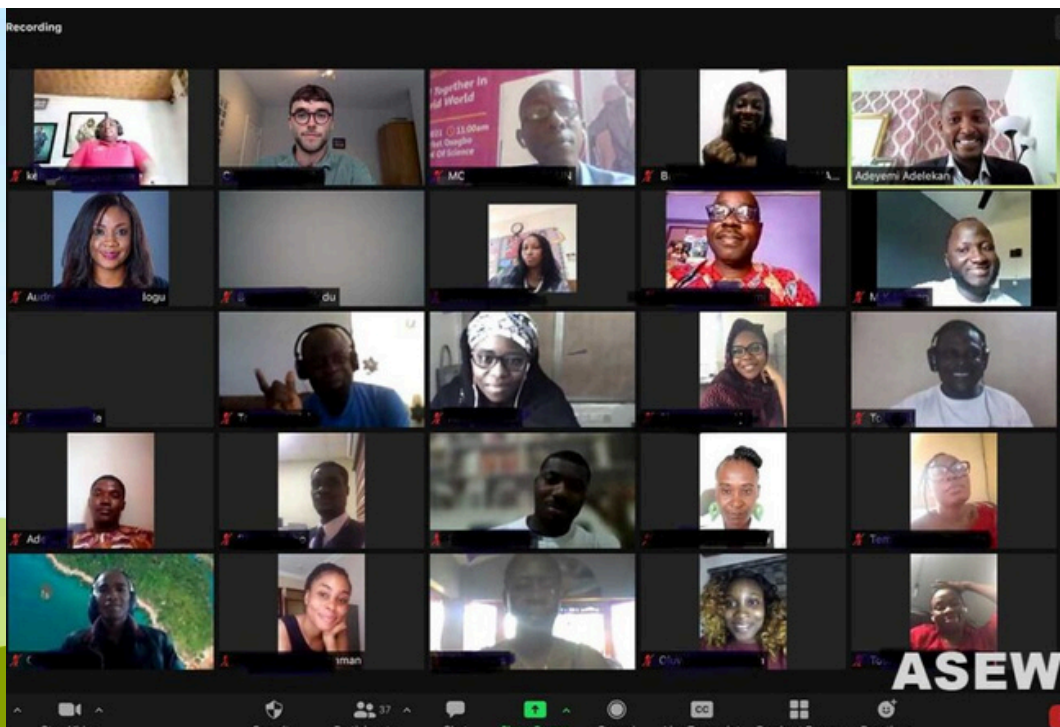


ASEW

**Positioning your Social Enterprise for new realities**  
Strategy and impact measurement workshop

16-17 July 2020  
12pm (WAT)

[Registration bit.ly/CUSPWorkshop](http://bit.ly/CUSPWorkshop)



ASEW

**Positioning your Social Enterprise for new realities**  
Strategy and impact measurement workshop

16-17 July 2020  
12pm (WAT)

[Registration bit.ly/CUSPWorkshop](http://bit.ly/CUSPWorkshop)

AFRICAN SOCIAL ENTERPRISE WORKSHOP

## INNOVATING YOUR COMMERCIAL MODEL SUSTAINABILITY

STRATEGIES, TOOLS AND SUPPORT FOR AFRICAN SOCIAL ENTERPRISES

[WWW.ASEWORKSHOP.COM](http://WWW.ASEWORKSHOP.COM)

**NDIFREKE OKWUEGBUNAM**  
Director, Programs and Grants, Aspire Coronation Trust (ACT) Foundation

**MARJO HEINONEN**  
Executive Director, Abilis Foundation

**BEATRICE BOAKYE-YIADOM**  
Grants Manager, African Women's Development Fund (AWDF)

**PURITY KAGWIRIA**  
Director, With and For Girls Fund Collective, Purposeful Productions

**FERGUS LYON**  
Director, CEED, Middlesex University, Deputy Director, CUSP

**SHARON COLLINS**  
President, Nonprofit Grant Solutions

**ARDINER**  
Officer, Women's Development (AWDF)

**BELVIN TAWUYA**  
Chief Marketing and Communications Officer, The Africa Center

**ADEYEMI ADELEKAN**  
Convenor, CUSP/Tyndall Centre

PARTICIPATING ORGANIZATIONS

[WWW.ASEWORKSHOP.COM](http://WWW.ASEWORKSHOP.COM)

6TH EDITION THEME:

# Resourcing Impact:

**Exploring opportunities, gaps, and strategies for sustaining impact initiatives in Africa**

## CONCEPT NOTE

African social enterprises and NGOs play a crucial role in addressing various socio-economic and environmental challenges across Africa. While this is widely acknowledged, understanding how they navigate their resource-constrained settings to address sustainable development challenges remains limited.

These impact-focused organizations often face constraints related to resources, hindering their ability to achieve sustainable impact at scale.

By understanding, attracting, and effectively managing resources, social enterprises can unlock new opportunities for growth, innovation, and positive change, thereby playing a pivotal role in catalyzing the sustainable development of Africa.

**KEYNOTES BY  
DISTINGUISHED  
EXPERTS**



**PANEL  
DISCUSSIONS**



**MASTERCLASSES  
AND SUSTAINABLE  
BUSINESS MODEL  
CLINIC**



**AWARDS,  
NETWORKING AND  
MORE**



# SUMMIT STRUCTURE

## Keynotes

Delivered by distinguished speakers who are experts or leaders in their respective fields, the keynote sessions will share knowledge on resources and resourcing barriers and strategies from social entrepreneurial, academic, and private sector or policy perspectives.

## Panel discussions

The panel discussions will engage experts to delve into key questions around resource access challenges and the role of the African social enterprise ecosystem in resourcing impact related work.

## Masterclasses

Masterclasses will be held to evaluate attendees' resource challenges and develop strategies for diversifying resource streams to ensure the resilience and sustainability of their impact-related work.

## Business Model Clinic

The Sustainable Business Model Clinic will involve attendees in the process of crafting new or refining existing business models aimed at generating financial income streams to sustain their impact-related work.

## Networking and more

The summit will provide attendees with opportunities to connect, engage, and collaborate with like-minded individuals and organizations committed to making a positive difference in Africa.

# Agenda\*

**Time: 12PM WAT**

**Date: August 29 & 30, 2024**

**Format: Hybrid**

Day	Description	Format
<b>1</b> Aug 29	<b>Keynotes speaker sessions</b>	<b>Virtual</b>
	<b>Panel discussion 1:</b> <i>Resource Scarcity, Inefficiency, or Limited Awareness? Understanding the resource challenges faced by impact-focused organizations and pathways to solutions.</i>	<b>Virtual</b>
	<b>Panel discussion 2:</b> <i>State of the African Social Enterprise Ecosystem in Resourcing Impact Work. Assessing Current Progress, Exploring Potential, and Charting Future Pathways</i>	<b>Virtual</b>
	<b>Sustaining Impact Prize Presentations</b>	<b>Virtual</b>
	<i>End of Day 1</i>	
<b>2</b> Aug 30	<b>Masterclasses &amp; Sustainable Business Model Clinic</b> <i>Holds at a centre in Nigeria, Zambia, South Africa, Kenya, Ivory Coast &amp; Tunisia A virtual class will be available for those outside those locations.</i>	<b>In-person**</b>
	<b>AOB</b>	<b>Virtual</b>
	<b>Vote of thanks</b>	<b>Hybrid</b>

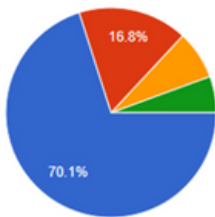
# Attendee profile from past events

ASEW attracts small organizations that have been in operations for up to 5 years and with 2-10 staff sizes.

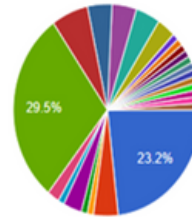
Role

Our programs attract participants with wide-ranging organizational roles within the social enterprise, NGO and business organizational forms. However, founders and managing directors makes up more than 50% of our participants.

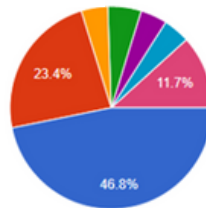
Years in operation



- 0-5 years
- 6-10 years
- 11-15 years
- 15 years and above



- Founder/Co-Founder (Founder/Co-F...
- CEO
- Managing Director (Directeur Général)
- Executive Director (Directeur Exécutif)
- Coordinator
- Program Manager (Gestionnaire de Pr...
- Volunteer
- Founder/Co-Founder



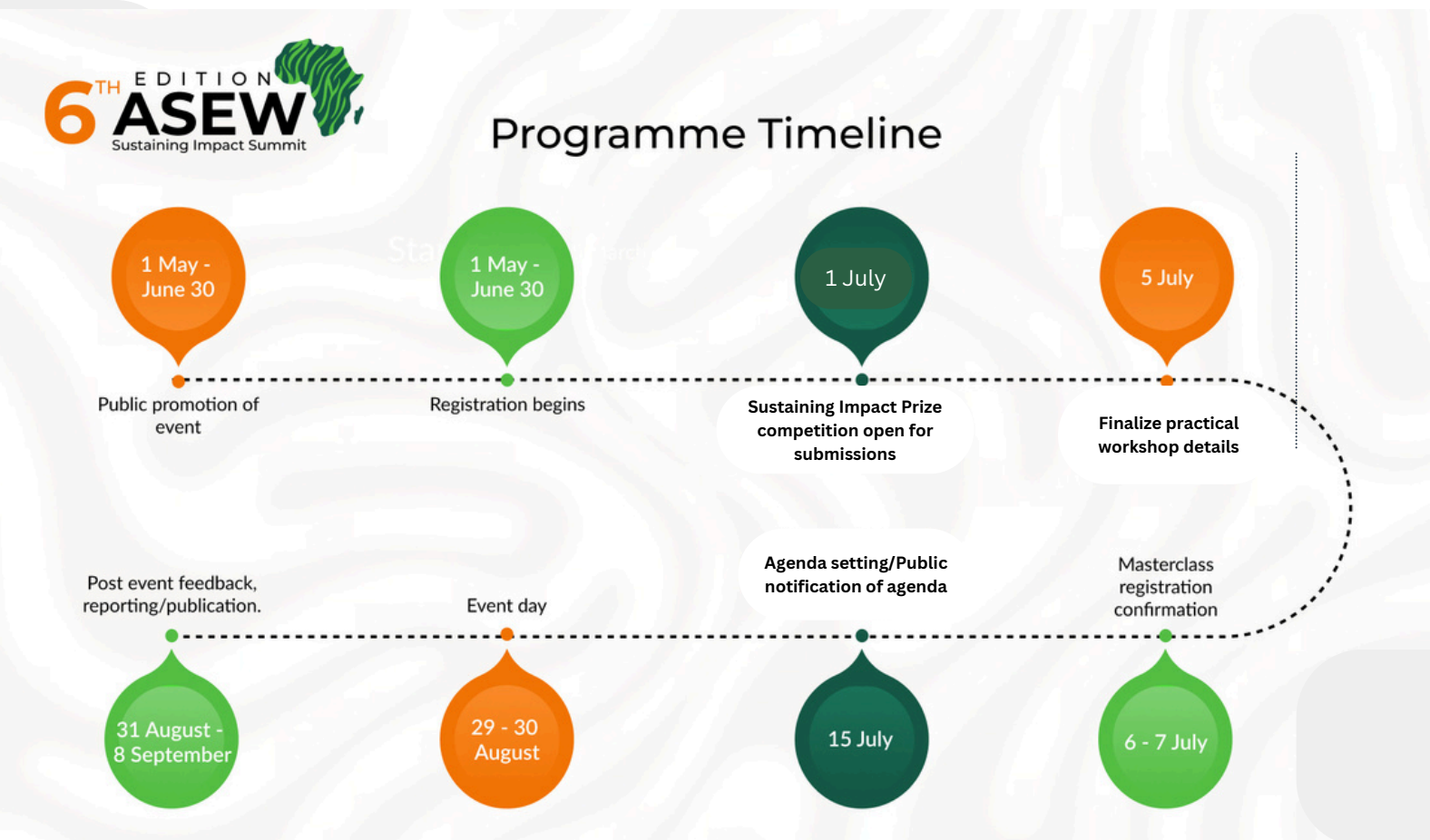
- 2-5
- 6-10
- 11-15
- 16-20
- 21-25
- 25 and above (i)
- 25 and above

- ▲ 1/4 ▼
- Coordinator
- CEO
- Executive Director
- Program Manager
- Volunteer
- Partnerships Executives
- Lagos Manager
- Intern
- ▲ 2/4 ▼
- Business Development
- Resource Mobilizer Manager
- Managing Director
- AI Engineer
- Assistant Chief Staff Development Offi...
- Waitee
- Database Manager
- Student
- ▲ 3/4 ▼

## 6th edition Partners



# Event Timeline



## Outputs and Outcome:

- Outputs such as recorded materials would be generated and made freely and publicly available.
- Also, insights from all the recorded materials would be distilled into a concise report that social enterprise practitioners can learn from or implement to improve their daily impact work.
- We firmly believe this event will amplify the discussions around resource access, equity, and management for impact-focused organizations, as well as impact sustenance, for a sustainable and prosperous future for all.



# Testimonials

*What the workshop accomplished, in light of the current situation, was to provide a common ground for struggling social entrepreneurs to re-think and re-strategize their interventions for transformative impact in this new era - Dr Ambrose Massaquoi*

*The workshop is very engaging and insightful. The workshop really helped me to quantify the work I do - Anonymous*

*The interactive part where on the second day it was more of practical experiences and things not abstract ideas. I really felt enriched- Anonymous*

*This two-day workshop which brought together practitioners and researchers was a unique opportunity to share the latest insights and knowledge useful in addressing current challenges in the social entrepreneurship field. This format promotes cross-fertilization, fruitful discussions and networking for social entrepreneurs eager to contribute to a better world" - Dr Guillaume Martins*

*The workshop was very well organized. It would be great to have a physical workshop and interact with you more one on one, probably at your place - Ndinda Mutia*

*It was a very informative workshop and I enjoyed all the sessions on both days. It opened my mind to reviewing our Business Model and look at sustainability from another perspective. This is a wonderful opportunity to network with other social entrepreneurs. Thank you so much- heartbeatclowns@xxx.com.*

*I personally felt particularly inspired by Mrs Alero Ayida-Otobo's talk and the concrete steps she set out for social enterprises to enable them to tackle the current challenges head-on. It was a real joy to work with the social entrepreneurs and it was very moving to hear about how the work they do change people's lives - Dr Andrea Werner.*

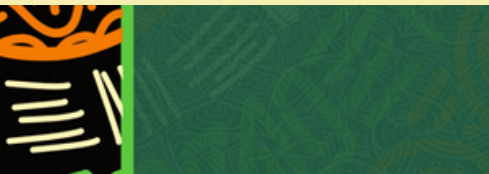
*The workshop was well organised. The hydroponic presentation highlighted a lot for me as i am interested in starting a farming business - nomqoliso@xxx.com.*

*Yes, I felt inspired to improve the story I'm telling when seeking funding. I was able to get some creative ideas flowing- struan@xxx.za.*

*I learnt a lot about running a social enterprise venture. I especially like insights about fundraising and partnerships- louise.mwangi@xxx.com.*

*Such speakers that don't just have the theory and knowledge but deliver with passion and I loose track of time. This speaker has set a gold standard and i appreciate you for sharing with us your rich network- benjamin.ndambuki@xxx.com.*

*Looking back, the two days impressively showed that the world is not on pause. By collaborating, sharing and developing new ideas amidst various crises, social entrepreneurs tirelessly work alongside accelerators, government and support organisations to make the world a bit better. With the tools and concepts provided in the workshop, they now are even better equipped to demonstrate that potential and put it into practice - Theresia Harrer*



## For inquiries, contact:

Dr Adeyemi Adelekan - Director ([a.adelekan@aseworkshop.com](mailto:a.adelekan@aseworkshop.com))

Rita Chikwem - Program Manager ([rita.chikwem@aseworkshop.com](mailto:rita.chikwem@aseworkshop.com))

Precious Oresanya - Social Media Manager ([precious.oresanya@aseworkshop.com](mailto:precious.oresanya@aseworkshop.com))



[www.aseworkshop.com/summit](http://www.aseworkshop.com/summit)



[sustainingimpacts Summit6@aseworkshop.com](mailto:sustainingimpacts Summit6@aseworkshop.com)



+447448006908 (WhatsApp)